



ACL AuditExchange™ 2009



ACL AuditExchange is a managed analytics platform built to provide value to every member of the audit department. It scales to the needs and size of the audit department and addresses the analytics requirements of each team member, from ad hoc and repetitive to continuous.

Key Benefits

Complete more value-add audit tasks with the same staff

- Audit tests, results and findings and other analytic information across the team can be stored, shared and re-used in the AuditExchange repository

Understand, manage and access data effectively

- Reach all data sources in the enterprise with market-leading Extract, Transform and Load (ETL) technology powered by Informatica® for deeper audit coverage
- ETL technology allows you to bring data from a multitude of sources into the AuditExchange repository — including complex and industry specific sources

Realize the full potential of your team

- Capitalize on each of your team members' strengths for consistent and quality audits
- Retain and capture your team's expertise and results even in the event of staff change

Major Features

Receive ACL Desktop Edition 9.1 for the whole department

Expand the use of *ACL* across the entire team to increase productivity.

Share across the team with the AuditExchange repository

Within the AuditExchange server, the AuditExchange repository is a centralized and secure location that allows: storage, documenting, sharing and reusing audit artifacts (such as data formats and sources); analytics such as audit tests and scripts; results and findings.

Browse your *ACL* projects with "My ACL Work"

The AuditExchange client allows users access to the central AuditExchange repository and the ability to scan their own work on their local drive. From My ACL Work, users can locate *ACL* project elements and select them for transfer to the AuditExchange repository.

Search *ACL* Resources

Locate audit artifacts such as projects, table layouts, log files and scripts in My ACL Work and/or the AuditExchange repository.

Copy and Move *ACL* Resources

"Drag and drop" or transfer files with a right-click between the AuditExchange repository and My ACL Work.

View Properties and Notes

Record, store and display information and history of *ACL* project elements such as tables and scripts. Some of the information includes: Who created, accessed and modified the *ACL* project element, the time and date of creation, the reason it was created, and appropriate usage.

Ensure Security and User Rights

ACL AuditExchange features Microsoft's implementation of LDAP (Lightweight Directory Access Protocol). This is used to establish the user rights for directories within the AuditExchange server.

ACL AuditExchange uses 128-bit Secure Sockets Layer (SSL) operating over Hyper Text Transfer Protocol Secure (HTTPS) to enable secure communications within ACL AuditExchange.

Manage Data and *ACL* projects centrally

ACL AuditExchange encourages centralized management of data and *ACL* projects. Only *ACL* table layouts and views are transferred to the *ACL* Desktop Edition. The .FIL files remain in the secure AuditExchange server where the processing of analysis takes place. Results and findings can also be stored in the secure AuditExchange repository for sharing and re-use across the team.



System Requirements

ACL AuditExchange 2009 is available in English, Non-Unicode distribution.

The system requirements for the ACL AuditExchange client component are as follows:

Supported Operating Systems

- Windows Vista (Professional Edition), Windows XP (SP2)

Recommended Requirements

- Pentium 1.8-gigahertz (GHz) processor or faster
- One gigabyte (GB) of RAM or higher
- 80GB Hard Drive or higher
- 10GB of additional hard drive space required for storage of data files
- DVD-ROM drive
- TCP/IP connectivity

The system requirements for the ACL AuditExchange server component are as follows:

Supported Operating Systems

- Microsoft Windows Server 2003 Release 1 (SP1) or Release 2 (SP2)

Recommended Requirements

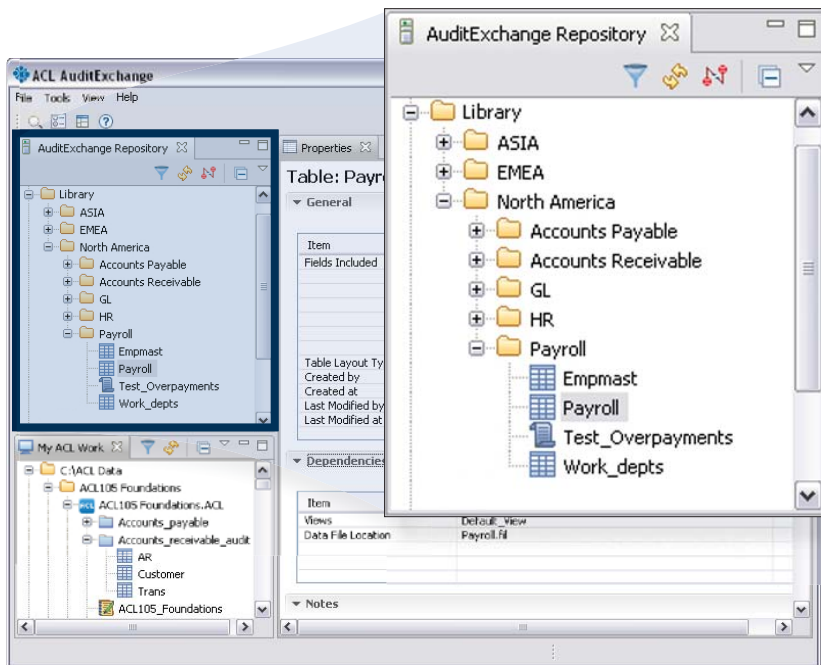
- One quad-core or two dual-core processors or processor at 2.5 GHz or higher
- 8GB of RAM
- At least 500GB of disk space for ACL AuditExchange application components and data files
- DVD-ROM drive
- TCP/IP connectivity

The requirements may vary depending on the extent of usage and the number of users.

Other Component Requirements

The following components are required and included with the download file, except Internet Explorer (IE). If IE is not detected, it will need to be downloaded.

- Internet Explorer 6.0 or higher
- Windows Installer 2.0 or higher
- MDAC 2.8 SP1 or higher
- MSJet 4.0 SP3 or higher
- MSXML 4.0 SP1 or higher
- Java Runtime Edition (JRE) 1.5



About ACL Services Ltd.

ACL Services Ltd. is the leading global provider of technology for audit and compliance professionals. Combining market-leading audit analytics software and professional services expertise, ACL solutions give auditors confidence in the effectiveness of internal controls and the integrity of the transactions underlying business operations.

Since 1987, ACL has enabled auditors to assure sustainable compliance, reduce risk, detect fraud, enhance profitability, and improve business performance. ACL delivers its solutions to more than 215,000 licenced users in over 150 countries through a global network of ACL offices and channel partners. Our customers include 95 percent of Fortune 100 companies, 85 percent of the Fortune 500 and over two-thirds of the Global 500, as well as hundreds of national, state, and local governments, and the Big Four public accounting firms.

© 2008 ACL Services Ltd.
DS/AX/E/043008
Printed in Canada.

ACL, the ACL logo, the ACL logo with the text "Data you can trust. Results you can see.", and Audit Command Language are trademarks or registered trademarks of ACL Services Ltd. Direct Link is a trademark of ACL International Inc. All other trademarks are the property of their respective owners.



ACL Headquarters

T +1 604 669 4225
F +1 604 669 3557

■ acl.com
info@acl.com